

Certificate of Analysis

Prepared for:

25mg CBD Capsules

LCJ Herbal Remedies

Product Description: Hemp CBD Soft Gel - 25mg/Soft Gel, CO2 and ISO in HSO (30ct. x 400 Bottles)

Invoice Number: 2020-3191

Lot Number: SG-06220-B2

Best By Date: Mar 01, 2022

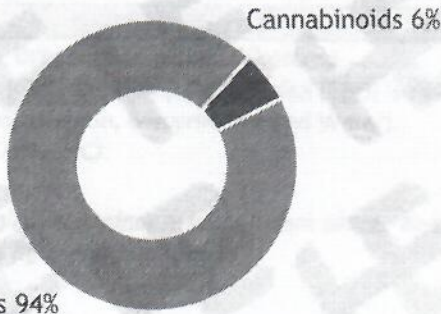
Product Code: SG-25-CO2-ISO-HSO

Date of Analysis: Mar 12, 2020

Manufacture Date: Mar 02, 2020

Cannabinoid Potency - Expected CBD: 25.00 mg/SoftGel ± 10%

% Total Cannabinoids



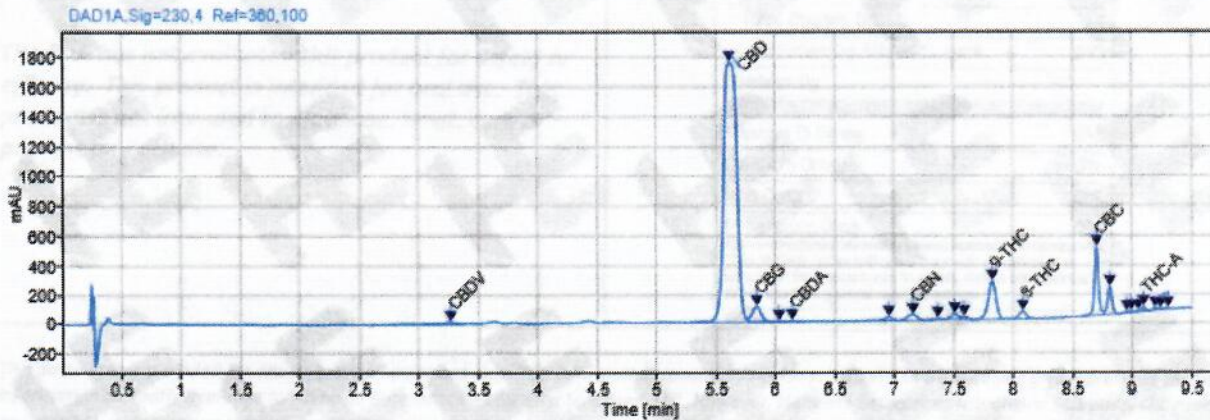
	mg/sg	%
Total CBD:	25.78 mg/sg	5.16 %
CBD:	25.77 mg/sg	5.15 %
CBDa:	<0.05 mg/sg	<0.01 %
d9-THC:	1.32 mg/sg	0.26 %
CBC:	0.58 mg/sg	0.12 %
CBG:	0.58 mg/sg	0.12 %
CBGa:	ND	ND
CBN:	0.09 mg/sg	0.02 %
CBDV:	0.11 mg/sg	0.02 %
d8-THC:	0.29 mg/sg	0.06 %
THCa:	<0.05 mg/sg	<0.01 %

Density: N/A (kg/m³) **Specific Gravity:** N/A

*Total d9-THC and CBD are calculated taking into account the loss of a carboxyl group during decarboxylation. The formulas are as follows: d9-THC = d9THC + (THCa * (0.877)) CBD = CBD + (CBDa * (0.877))

**Any compounds with results listed as "ND" were not detected during analysis.

Chromatogram



Approved By: S. Scarabosio
Analytical Laboratory Manager
Apr 14, 2020



Analyzed via HPLC Under These Conditions: Humidity: 26% Temperature: 70.2 °F

ISO 9001:2015 Certificate Number: US4293

Certificate of Analysis test results are based only on the analysis of the product listed in the "Product Description" of this form. Hammer Enterprises, LLC, makes no claims as to the efficacy, safety, or other risks associated with any detected or non-detected compounds reported herein. All analyses conducted at Hammer Enterprises, LLC, is performed on well-maintained, quality instruments utilizing Good Laboratory Practices and validated methodology. This Certificate may not be reproduced except in full, without the written approval of Hammer Enterprises, LLC. DISCLAIMER: When reviewing certificate ensure watermark is complete and intact. Watermark will present as repeating HE logos diagonally across the entire page. The authenticity of this document is not guaranteed if there is evident modification, blurring, or alterations of the watermark.