

Product Description: Hemp CBD Soft Gel 75mg Full Spectrum in Hemp Seed Oil (250x30ct)

Invoice Number: 2020-764A

Lot Number: SG-10719-B1

Best By Date: Apr 16, 2021

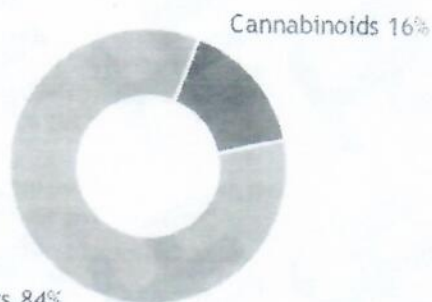
Product Code: SG-75-CO2-ISO-HSO

Date of Analysis: Oct 09, 2019

Manufacture Date: Apr 17, 2019

Cannabinoid Potency - Expected CBD: 75.00mg/sg ± 10%

% Total Cannabinoids

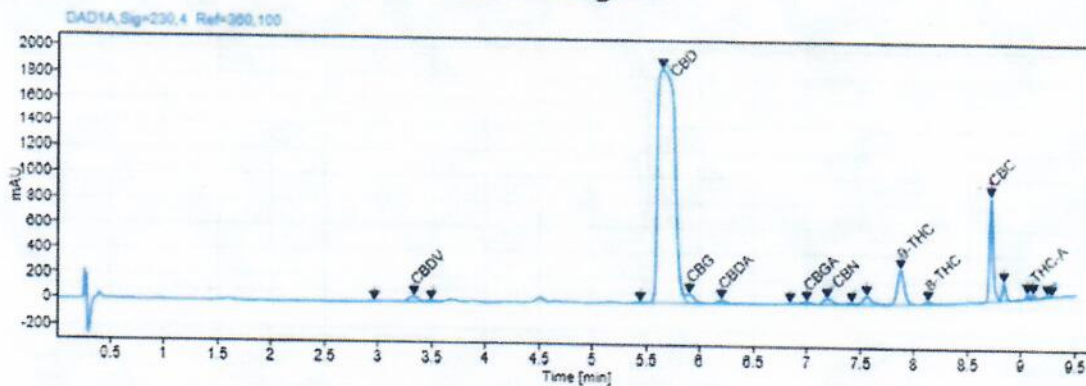


	mg/SG	%
Total CBD:	76.29 mg/sg	15.26 %
CBD	76.23 mg/sg	15.25 %
CBDa:	0.06 mg/sg	0.01 %
d9-THC:	1.19 mg/sg	0.24 %
CBC:	0.96 mg/sg	0.19 %
CBG:	0.35 mg/sg	0.07 %
CBGa:	<0.05 mg/sg	<0.01 %
CBN:	0.09 mg/sg	0.02 %
CBDV:	0.24 mg/sg	0.05 %
d8-THC:	0.10 mg/sg	0.02 %
THCa:	<0.05 mg/sg	<0.01 %

*Total d9-THC and CBD are calculated taking into account the loss of a carboxyl group during decarboxylation. The formulas are as follows: d9-THC = d9THC - (THCa * 0.877) CBD = CBD - (CBDa * 0.877)
 **Any compounds with results listed as "ND" were not detected during analysis.

Density: N/A (kg/m³) Specific Gravity: N/A

Chromatogram



Approved By: B. Estes
 Quality Assurance/Quality Control
 Aug 31, 2020



Analyzed via HPLC Under These Conditions: Humidity: 27% Temperature: 67.6 F

ISO 9001:2015 Certificate Number: US4293

Certificate of Analysis test results are based only on the analysis of the product listed in the "Product Description" of this form. Hammer Enterprises, LLC, makes no claims as to the efficacy, safety, or other risks associated with any detected or non-detected compounds reported herein. All analyses conducted at Hammer Enterprises, LLC is performed on well-maintained, quality instruments utilizing Good Laboratory Practices and validated methodology. This Certificate may not be reproduced except in full, without the written approval of Hammer Enterprises, LLC. DISCLAIMER: When reviewing certificate ensure watermark is complete and intact. Watermark will present as repeating HE logos diagonally across the entire page. The authenticity of this document is not guaranteed if there is evident modification, blocking, or obliteration of the watermark.