

Certificate of Analysis

Prepared for:

LCJ Herbal Remedies

250mg Drops - Strawberry

Product Description: Hemp CBD Tincture 250mg/30mL, MCT, STR, CO2

Invoice Number: 2020-520A

Lot Number: T-17620-B5

Best By Date: Dec 23, 2021

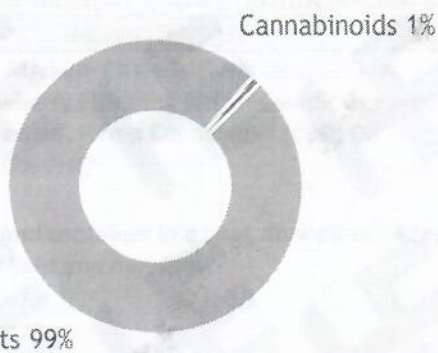
Product Code: T-250-CO2-MCT-STR-30mL

Date of Analysis: Jun 25, 2020

Manufacture Date: Jun 24, 2020

Cannabinoid Potency - Expected CBD: 8.33mg/mL ± 10%

% Total Cannabinoids



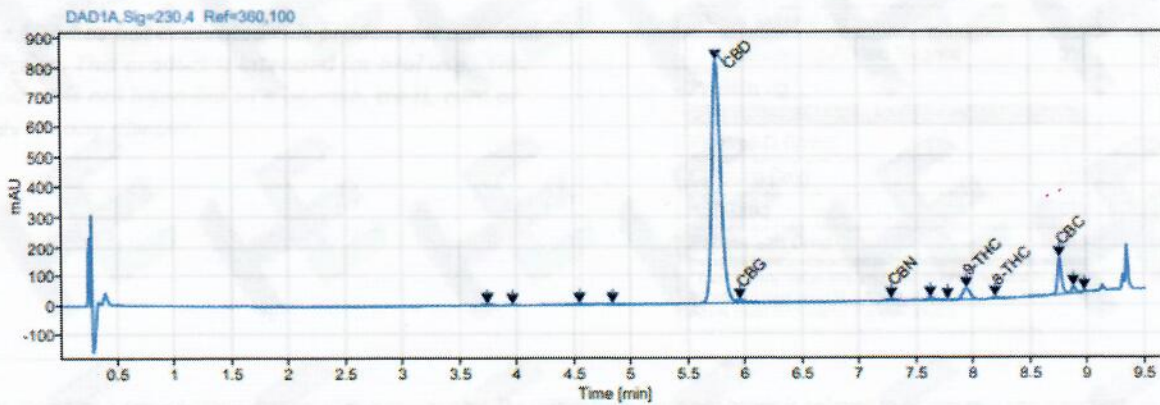
	mg/mL	%
Total CBD:	9.09 mg/mL	0.91 %
CBD:	9.09 mg/mL	0.91 %
CBDa:	ND	ND
d9-THC:	<0.05 mg/mL	<0.01 %
CBC:	0.55 mg/mL	0.06 %
CBG:	0.10 mg/mL	0.01 %
CBGa:	ND	ND
CBN:	<0.05 mg/mL	<0.01 %
CBDV:	ND	ND
d8-THC:	0.06 mg/mL	0.01 %
THCa:	ND	ND

*Total d9-THC and CBD are calculated taking into account the loss of a carboxyl group during decarboxylation. The formulas are as follows : d9-THC = d9THC + (THCa *(0.877)) CBD = CBD + (CBDa *(0.877))
 **Any compounds with results listed as "ND" were not detected during analysis.

Density: 0.898 (kg/m³)

Specific Gravity: 0.900

Chromatogram



Approved By: S. Scarabosio
 Analytical Laboratory Manager
 Jun 26, 2020



Analyzed via HPLC Under These Conditions: Humidity: 32% Temperature: 75.4°F

ISO 9001:2015 Certificate Number: US4293

Certificate of Analysis test results are based only on the analysis of the product listed in the "Product Description" of this form. Hammer Enterprises, LLC, makes no claims as to the efficacy, safety, or other risks associated with any detected or non-detected compounds reported herein. All analyses conducted at Hammer Enterprises, LLC, is performed on well-maintained, quality instruments utilizing Good Laboratory Practices and validated methodology. This Certificate may not be reproduced except in full, without the written approval of Hammer Enterprises, LLC. DISCLAIMER: When reviewing certificate ensure watermark is complete and intact. Watermark will present as repeating HE logos diagonally across the entire page. The authenticity of this document is not guaranteed if there is evident modification, blocking, or alterations of the watermark.