



Certificate of Analysis

Prepared for:

LCJ Herbal Remedies

Product Description: Hemp CBD Tincture - 6,000mg/100mL, CO2, MCT, Mint Flavor

Invoice Number: 2019-1373C

Lot Number: T-33819-B4

Best By Date: Dec 03, 2020

Product Code: T-6000-CO2-MCT-MT-100mL

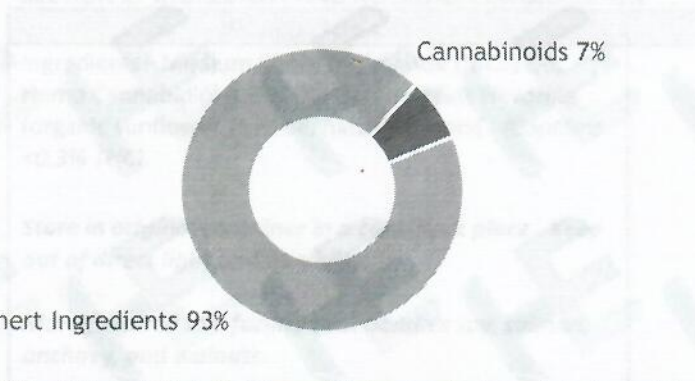
Ultra Mint

Date of Analysis: Dec 04, 2019

Manufacture Date: Dec 04, 2019

Cannabinoid Potency - Expected CBD: 60.00 mg/mL ± 10%

% Total Cannabinoids



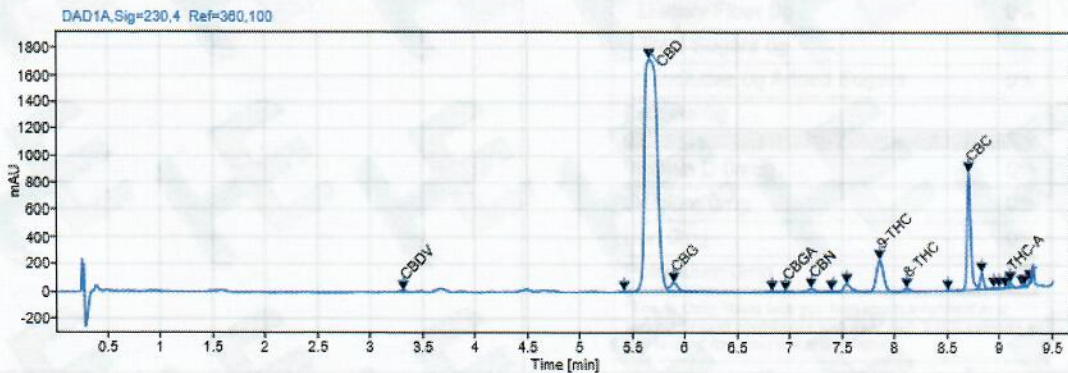
	mg/mL	%
Total CBD:	65.50 mg/mL	6.55 %
CBD:	65.50 mg/mL	6.55 %
CBDa:	ND	ND
d9-THC:	2.30 mg/mL	0.23 %
CBC:	2.26 mg/mL	0.23 %
CBG:	0.66 mg/mL	0.07 %
CBGa:	<0.05 mg/mL	<0.01 %
CBN:	0.08 mg/mL	0.01 %
CBDV:	0.08 mg/mL	0.01 %
d8-THC:	0.21 mg/mL	0.02 %
THCa:	0.07 mg/mL	0.01 %

*Total d9-THC and CBD are calculated taking into account the loss of a carboxyl group during decarboxylation. The formulas are as follows: d9-THC = d9THC + (THCa * (0.877)) CBD = CBD + (CBDa * (0.877))
 **Any compounds with results listed as "ND" were not detected during analysis.

Density: 0.856 (kg/m³)

Specific Gravity: 0.858

Chromatogram



Approved By: S. Scarabosio
 Analytical Laboratory Manager
 Dec 05, 2019



Analyzed via HPLC Under These Conditions: Humidity: 24% Temperature: 71.1°F

ISO 9001:2015 Certificate Number: US4293

Certificate of Analysis test results are based only on the analysis of the product listed in the "Product Description" of this form. Hammer Enterprises, LLC, makes no claims as to the efficacy, safety, or other risks associated with any detected or non-detected compounds reported herein. All analysis conducted at Hammer Enterprises, LLC, is performed on well-maintained, quality instruments utilizing Good Laboratory Practices and validated methodology. This Certificate may not be reproduced except in full, without the written approval of Hammer Enterprises, LLC. **DISCLAIMER:** When reviewing certificate ensure watermark is complete and intact. Watermark will present as repeating HE logos diagonally across the entire page. The authenticity of this document is not guaranteed if there is evident modification, blocking, or alterations of the watermark.